

# ONSHORE WELL

LOCATION:  
TEXAS / USA



## WELL ID

Well 1 (Details confidential)

## DATE OF STIMULATION

2015-05-20

## HF – GENERATOR

5 kW

## PRODUCER

Confidential

## TOTAL STIMULATED LENGTH [ft]

22

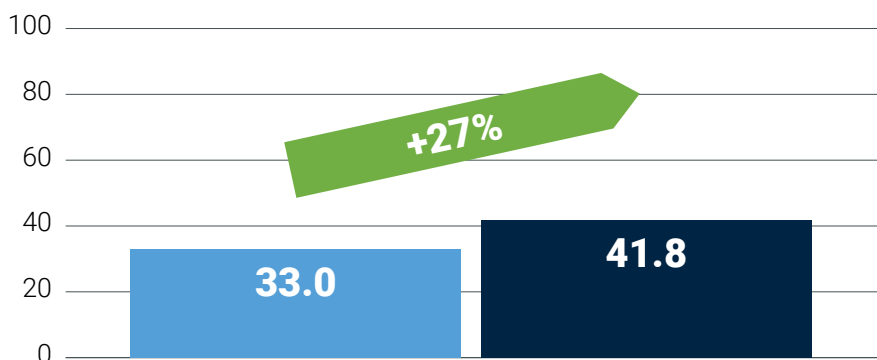
## RESONATOR

TIT-44

|   |                  |
|---|------------------|
| Year of completion                              | 2001             |
| Total well depth [ft]                           | 9420             |
| Production methodology                          | Sucker Rod Pump  |
| EOR methodology                                 | Waterflood       |
| Lithology at perforation depth                  | Porous Limestone |
| Temperature at perforation depth [Deg C]        | 63.6             |
| Hydrostatic pressure at perforation depth [psi] | 1180             |
| API grade                                       | 35               |
| Well inclination at perforation depth [deg]     | 0                |
| Casing OD at perforation depth [in]             | 5.5              |
| Total stimulation time                          | 11 hours         |

## [BOPD]

■ Prior stimulation ■ After stimulation ■ Increase / Decrease



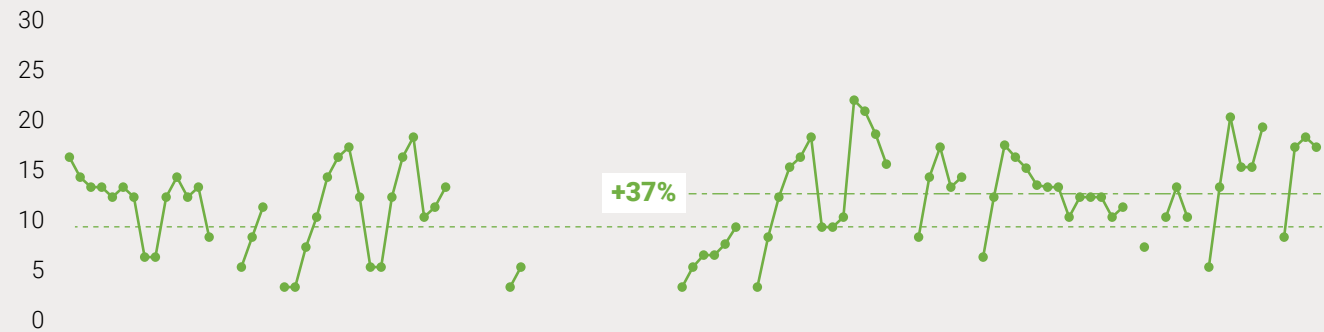
Average Oil production – 2 months monitoring

|              | PRIOR | AFTER |
|--------------|-------|-------|
| Water [BWPD] | 65.0  | 66.2  |
| Gas [MCFPD]  | 9.0   | 12.3  |

# WELL 1 – PRODUCTION

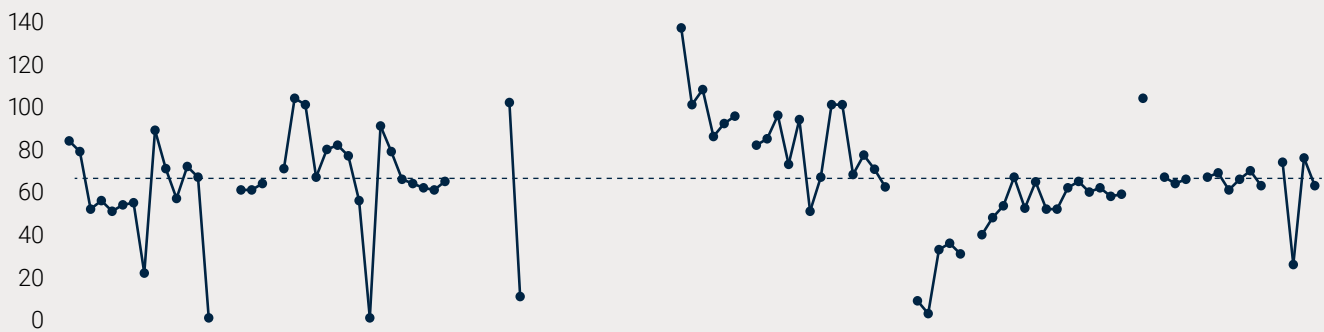
## Gas Production [Mcfpd]

----- Average Gas Production prior US Stimulation    - - - - - Average Gas Production after US Stimulation



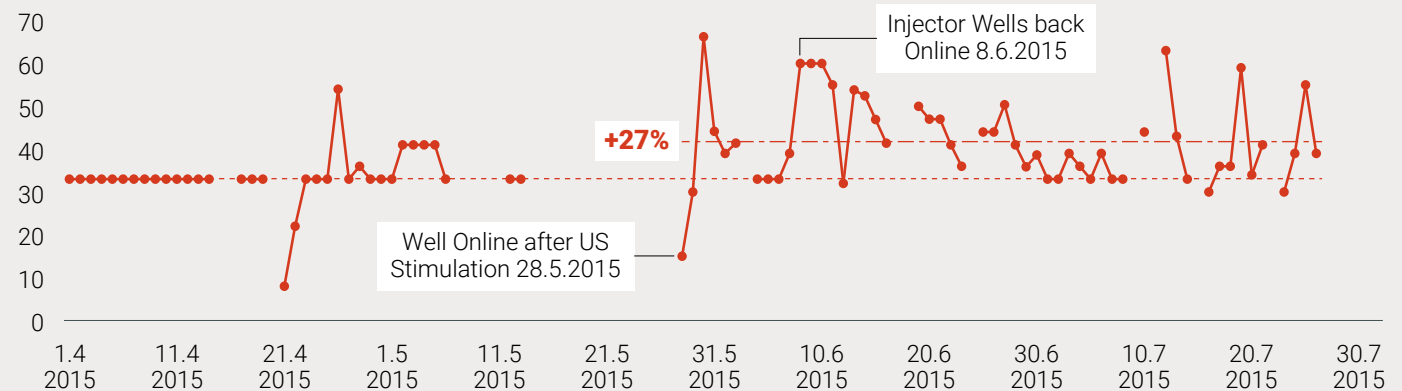
## Water Production [bpd]

----- Average Water Production prior US Stimulation



## Oil Production [bpd]

----- Average Oil Production prior US Stimulation    - - - - - Average Oil Production after US Stimulation



**Note: Well still producing approximately +20%;  
5 months after stimulation**